

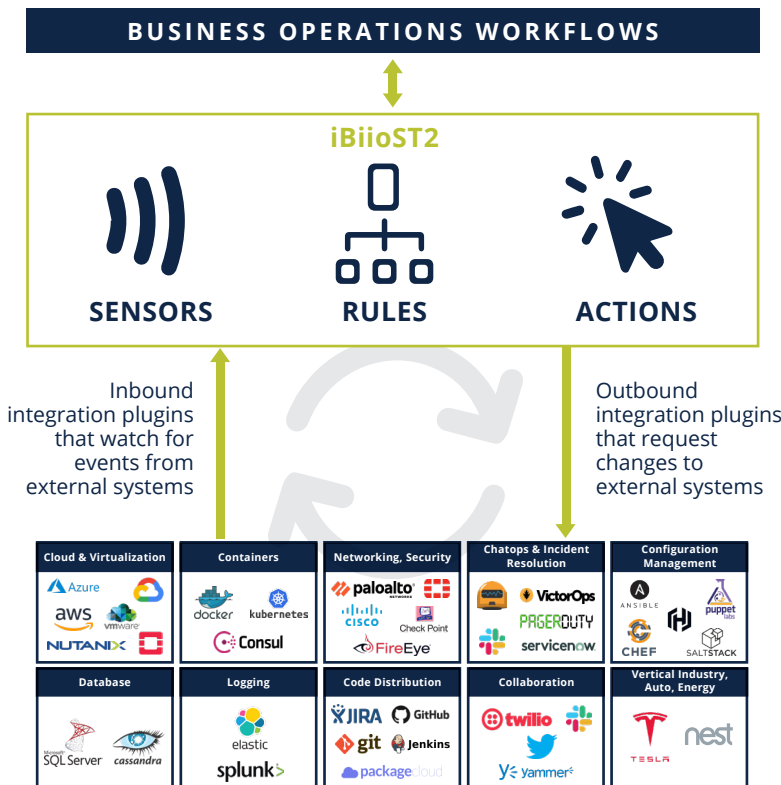


# iBiiOST2 V4.0

## Event Driven Workflow Automation

### Product Definition

iBiiOST2 by Orchestral is an event-based business workflow automation platform that leverages the open source StackStorm. As an enterprise-grade workflow automation platform iBiiOST2 features an intuitive drag-and-drop Workflow Design Studio, a design canvas to create complex cross-domain process workflows of arbitrarily high complexity. Proven to reduce mean time to resolution from days to minutes, iBiiOST2 extends beyond automation with a vast list of integrations across diverse IT and non-IT domains. Additionally, iBiiOST2 features LDAP and RBAC security, as well as a web-based Admin UI for managing iBiiOST2 components.



### CROSS DOMAIN INTEGRATIONS

Figure 1 - Architecture of iBiiOST2 by Orchestral.ai

### Key Advantages



Vendor agnostic point of access for all users involved in a given workflow



450+ integrations across multiple IT domains



Sensor, rule, and action based real time cross-domain automation



User-friendly API interface



Designed for customization



Agility of Open Source



Scalable for any use case



DIY workflows ranging from chat notification to complex automated server provisioning



Powered by  
**iBii Platform**



## Features

COMPONENT	DESCRIPTION
<b>Workflow Design Studio</b>	Use visually descriptive drag-and-drop functionality to design and develop complex process workflows.
<b>Zero-Touch Support</b>	Industry-first support model built into iBiiOST2, delivers support with no phone call, email or portal. Auto-collects relevant data and forwards it to Orchestral Support for instant triaging. Integrates with existing customer ITSM systems.
<b>RBAC Integration</b>	Controls access to packs, actions and sensors based on user credentials.
<b>LDAP Integration</b>	Synchronize physical and logical access and manage from a single point of entry.
<b>Cisco Premium Pack</b>	Automation pack integration to perform configuration and view actions on Cisco IOS/NXOS devices.
<b>Palo Alto Firewall Premium Pack</b>	Automation pack to perform day 0, day 1 and day n operations on Palo Alto Firewall devices using integrations with Palo Alto Panorama management station.

## Product Specifications

COMPONENT	RECOMMENDED MINIMUM FOR TESTING	RECOMMENDED FOR PRODUCTION
<b>Server Operating System</b>	RHEL 8.x; CentOS 8.x; Ubuntu 18.04	RHEL 8.x; CentOS 8.x; Ubuntu 18.04
<b>Server CPU</b>	Dual Core CPU	Quad Core CPU
<b>Server Memory</b>	2 GB RAM	>16 GB RAM
<b>Server Storage</b>	10 GB	40 GB
<b>Programming Languages</b>	Python, Orquesta	Python, Orquesta
<b>Language Models and APIs</b>	YANG, NETCONF, YAML, REST	YANG, NETCONF, YAML, REST



Powered by  
**iBii Platform**

# Ordering Information

iBiiOST2 comprises the StackStorm automation platform and a vast list of integrations for different IT and non-IT domains. The automation platform includes all required services, LDAP and RBAC security, the Web-based Admin UI for managing iBiiOST2 components and the Workflow Design Studio for creating new workflow code using drag-and-drop methods. For more information about iBiiOST2, visit: [www.orchestral.ai](http://www.orchestral.ai)

PART NUMBER	SUBSCRIPTION
ORCH-PR-ST2-PLAT	One year subscription for the iBiiOST2 Premier automation platform, per data center or admin domain.*
ORCH-PR-ST2-HA-PLAT	One year subscription for the iBiiOST2 Premier High Availability automation platform, per data center or admin domain.*
ORCH-PR-ST2-<AUTO-PACK>	One year subscription for the iBiiOST2 Premier <Auto-Pack> Automation Pack developed by Orchestral.ai
ORCH-OS-ST2-CLDY-XXX	One-year subscription for the iBiiOST2 Open Source Cloud Automation Pack Support.
ORCH-OS-ST2-VIRT-XXX	One-year subscription for the iBiiOST2 Open Source Virtualization Automation Pack Support.
ORCH-OS-ST2-XXX-XXX	One year subscription for iBiiOST2 Open Source Automation Pack Support**
	<b>Professional Services</b>
ORCH-PS-ST2	Architectural system design & engineering (Requirements, System Design, Training Workflow Drawings). Qty = Units. 1 Unit is one day.

\* Includes LDAP, RBAC security, the Designer UI, and Orchestral TechSupport.

\*\* There are over 450 integrations available. Please contact Orchestral.ai's Client Development Team for specific SKU numbers and pricing.

## Getting Started

iBiiOST2 is available as a free 45-day Proof of Value evaluation. To obtain a copy, go to [orchestral.ai](http://orchestral.ai) & register to download the evaluation copy by filling out our contact form or emailing us at [info@orchestral.ai](mailto:info@orchestral.ai).



**Orchestral.ai**  
AI-Driven Orchestration

Orchestral.ai is a team of like-minded technology professionals possessing a combined experience of over 100 years in the IT industry.

Our team is uniquely versed in building commercial web scale clouds architectures, extensive knowledge and experience in data center operations and building data centers across the globe. We also pride ourselves on our expertise in the field of system modeling for capacity planning, scaling business applications, and our focus on the user experience. The combined expertise of our team at Orchestral has been leveraged to assemble the patented technologies aimed at alleviating the pains currently plaguing the IT industry.

## Contact Us

For more information, please contact our Client Development Team at [info@orchestral.ai](mailto:info@orchestral.ai)

©2020 Orchestral.ai, Inc. All rights reserved. Orchestral.ai and the Orchestral.ai logo are trademarks or registered trademarks of Orchestral.ai, Inc. in the United States and/or other countries. All other names are the property of their respective owners. For additional information on Orchestral.ai Trademarks please see <http://www.orchestral.ai/company/legal/trademarks>. Specifications and product availability are subject to change without notice.

©2020 Orchestral, Inc. All rights reserved. | [www.orchestral.ai](http://www.orchestral.ai)